



9TH KY (CO. B)



UNIFORM & VENDOR GUIDELINES

The vendors listed below are for the convenience of new recruits and the accomplished veterans. These are only informed suggestions; consider them, but by all means feel free to shop around for quality goods that help your impression.

Historical myth states that the Confederate soldier was constantly short in food, munitions and uniforms. Historical fact has shown that although the Confederate soldier experienced shortages more frequently than his Union counterpart, the ad hoc Confederate war effort was for the most part effective in meeting the demands placed by its soldiers. While the gear was far from a standard issue standpoint, most Confederate soldiers were still reasonably supplied until late 1864.

As reenactors portraying Kentucky Confederate soldiers, we have even more leeway than reenactors portraying a unit from a state that was relatively beyond Union control for most of the war. (Georgia, S.C., N.C, etc) The KY soldier's supply situation was primarily dependent on the Confederate central government based in Richmond after early 1862 when the Confederacy was forced from Kentucky by Union offensives. Most other Confederate states up till 1864 were functional enough to provide some supply options to their regiments at the front. For this reason we as a unit have more choices for having quality, unique and correct impressions.

Uniform (Jackets, Trousers, Shirts, etc.)

All Uniform Jackets and Trousers *must* be of a Jean wool variety, all members of the unit buying pressed ANV wool issue will be shot. (*Seriously...just don't tempt us.*)

Primary Jacket Option:

(Columbus Depot Jackets)

(Type I – Mid 1862 thru late 1863)



(Type II – Late 1863 thru 1865)

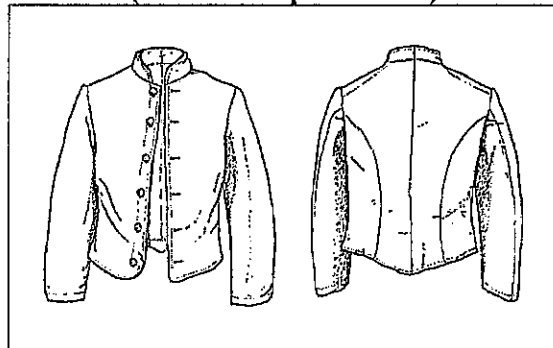


Secondary Jacket Option:

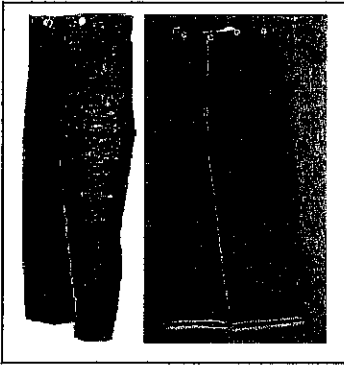
(Mobile Depot Jacket)



(Atlanta Depot Jacket)



Trousers:



All Mule-Ear pocket, military issue from the state and central government depots are acceptable for uniform trousers. However, if it is military style you chose, they must be of Jean-Wool. All civilian patterns and material are acceptable. (Note: US Blue trousers should be only be used as a last resort, the AOT did not have the same opportunities as the ANV did scavenging battlefields for supplies)

Brogans:

Both civilian and military issue work for this, it's up to the individual choice of preference.

Shirts, Socks, Vests & Suspenders:

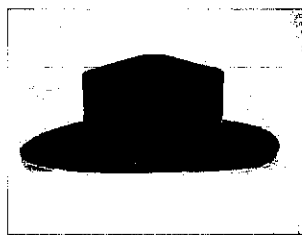
- * **Shirts:** A decent shirt can be found from any mainstream sutler, just make sure the garment has plenty of moving room. And this is crucial, remember when choosing a shirt that you take into account different weather seasons.
- * **Socks:** wool and cotton material acceptable. Again most sutlers carry decent sock styles, more authentic designs can be ordered from other suppliers.
- * **Suspenders:** are a must when considering period trousers don't fit like modern garments. Almost any sutler carries a brand of suspender. Just be sure to make sure they are of no modern material construction. (*Anyone using elastic suspenders enters camp at your own risk.*)
- * **Vests:** are nice additions to any impression but not a necessity, if you should want one, get a civilian model. They work with any scenario for Confederates.

Hats:

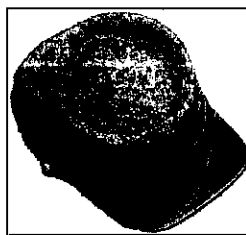
You have two choices when looking for headgear, a slouch hat or a kepi. A slouch is a godsend for giving great protection from the weather. However, there are those that prefer the kepi for their own reasons. Both are correct and should be chosen by the user for own needs. The slouch may run you more but it's built for years of use. All kepis must be of jean wool construction.



(Beehive Slouch)



(Civilian)



(Military Issue Jean Wool Kepi)

Accouterments:

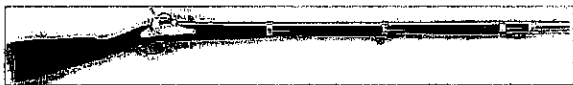
- * **Haversacks:** White linen, oiled cloth or tarred are acceptable, both Federal and Confederate models are approved.
- * **Cartridge Boxes:** Dependent on caliber of firearm you carry, (i.e. if you have a .58 cal rifle, carry a .58 cal cartridge box.) Black leather Federal models approved, or Confederate black, brown leather and oiled canvass models.
- * **Belts and Buckles:** Black or brown leather; and oiled canvass approved. Belt buckles must be either Georgia Frames, Atlanta Arsenal Rectangle C.S.A plates or forked tongue model. *(Please no US ovals, the Confederate models are similar in price, so you might as well get those.)*
- * **Canteen:** Tin style; smoothbore or bulls eye style, both have to be either covered in federal blue kersey or jean wool of any color. Wooden models are approved and styles may vary.
- * **Cap Boxes:** Black leather Federal models approved, or Confederate black, brown leather and oiled canvass models.
- * **Knapsacks or Bedroll:** All Black Federal Double Bag Knapsack models approved since the Confederate government would take captured Federal bags and reissue to various departments. Models of Confederate model issue are also acceptable but we also urge members to try the bedroll. Any member would be happy to show how to roll one and place gear accordingly.
- * **Bayonet Scabbards:** According to type of model firearm you carry, if you have a US Springfield, you have to have a US Model leather scabbard or a Confederate issue variant. *(A metal end tip is required for the safety of the wearer and his comrades.)*

Firearms:

All these firearms are correct for they all saw service with the KY Brigade at one time or another, the 1842 mostly at the beginning of the war. The rifled British .577 cal Enfield and US .58 cal Springfield were more prevalent from mid-1862 onward, both can use the same caliber bullet but the Enfield is the preferred choice.



1842 US Springfield Smoothbore Musket .69 cal



1861 Springfield Rifled Musket .58 cal



1853 British Enfield Rifled Musket, .577 cal

Sources:

These sources for reenacting gear are unit suggestions, nothing more. All newcomers are **STRONGLY** urged to ask veterans about their experiences with vendors (i.e. sutlers).

Veterans have all been down that road before regarding where to get what, who has the best of what, and who has nothing but junk. We would be happy to show newbie's the ropes, and nobody wants unit members spending their hard earned dollars on junk that will sit in your basement for years. If anyone has question, *please ask!*

◆ Uniforms

Whitewater Trading Co.

Uniforms

➤ Jacket, Trousers, Vest

Whitewater Trading Co.

836 Senoia Road
P.O. Box 272
Tyrone, GA 30290
(770) 487-9466

(*Note: These suppliers below deal in Hand-Sewn articles, i.e. – more expensive but the finest quality construction and material)

Cotton City Tailors

7590 Meadows Drive South
Mobile, AL 36619
(251) 666-2792
<http://www.cottoncitytailors.com/>

C&D Jarnigan

Uniforms

➤ Jacket, Trousers, Vest, Shirts,
Period Underwear

C&D Jarnagin Co.

P.O. Box 1860
Corinth, MS 38835-1860
Phone: (662) 287-4977
www.jarnaginco.com

Trans-Mississippi Depot Co.

209 W. Spur Drive
Cottonwood, AZ 86326
(928) 649-1395
Hours: 7AM - 7PM Mon-Fri, (M Time)
Email: donsmith@trans-mississippi.com
<http://www.trans-mississippi.com/>

◆ Hats

Clearwater Hat Co.

➤ Slouch Hats

Clearwater Hats

1007 Clearwater Road
Newnata/Timbo, AR 72680
Phone: (870) 347-2252
www.clearwaterhats.com

Trans-Mississippi Depot.

Kepis only please, it was a preferred choice for KY units besides the quality slouch.

Trans-Mississippi Depot Co.

209 W. Spur Drive
Cottonwood, AZ 86326
(928) 649-1395
Hours: 7AM - 7PM Mon-Fri, (M Time)
Email: donsmith@trans-mississippi.com
<http://www.trans-mississippi.com/>

C & D Jarnigan

➤ Kepis only please,
it was a preferred choice
for KY units besides the
quality slouch.

C&D Jarnagin Co.

P.O. Box 1860
Corinth, MS 38835-1860
Phone: (662) 287-4977
www.jarnaginco.com

◆ Leathers & Accouterments

Haversack Depot

P. O. Box 311262
New Braunfels, TX 78131
Phone: (830) 620-5192
Email: PCAVANAUGH1@satx.rr.com
www.haversackdepot.com

C&D Jarnagin Co.

P.O. Box 1860
Corinth, MS 38835-1860
Phone: (662) 287-4977
www.jarnaginco.com

Missouri Boot and Shoe Co.

951 Burr Crossing Rd.
Neosho, Missouri 64850
Phone: (417) 451-6100
<http://www.missouribootandshoe.com/>

Trans-Mississippi Depot Co.

209 W. Spur Drive
Cottonwood, AZ 86326
(928) 649-1395
Hours: 7AM - 7PM Mon-Fri, (M Time)
Email: donsmith@trans-mississippi.com
<http://www.trans-mississippi.com/>

◆ Footwear

Orchard Hill Sutlery

*Mattimore Harness, subcontractor
415 Esperance Road
Esperance, New York 12066
<http://www.orchardhillsutlery>

Fugawee Corporation

3127 Corrib Drive
Tallahassee, FL 32308
Email: fugawee@comcast.net
www.fugawee.com

Missouri Boot and Shoe Co.

951 Burr Crossing Rd.
Neosho, Missouri 64850
Phone: (417) 451-6100
<http://www.missouribootandshoe.com/>

◆ Misc.

James Country Mercantile

111 N. Main St.
Liberty, MO 64068
(816) 781-9473
<http://www.jamescountry.com>

Bent's Hardtack

7 Pleasant St
Milton, MA. 02186
P:(617)698-5945
www.bentscookiefactory.com/hardtack.htm

Mercury Supply Company Sutler

*Best supply of solid brass buttons
101 Lee Street
Livingston, TX 77351
Phone: (936) 327-3707
Fax: (936) 327-3791
<http://www.mercurysutler.com/index.html>

Village Tinsmithing Works

P.O Box 539
Hamptonville, N.C 27020
Ph: 336-468-1190
F: 336-468-1191
www.csa-dixie.com/villagetinsmith

Panther Lodges

Tents and Shelter Canvas
Ph: 1-800-487-2684
www.pantherprimitives.com

Spectacle Accoutrements

* Best place to go for period eyewear

2918 N. Rolling Road
Baltimore, MD 21244
Phone: 410-281-6069
E-mail: cwspecs@verizon.net

Dog River Glassworks

* The final place to go for period reproduction glassware.
<http://www.dogriverglassworks.com/index.html>
Email: wrosecrans@aol.com

Sullivan Press

3405 Main St.
Box 407
Morgantown, PA 19543-0407
phone: (610) 286-7905.
<http://www.sullivanpress.com>

◆ Authenticity overhaul for weapons and weapon supplies

Lodgewood

Whitewater, WI
Ph: (262) 473-5444
Fax (262) 473-6448
<http://www.lodgewood.com/>

John Zimmerman - Gunsmith

P.O. Box 1351
(1239 Washington Street)
Harpers Ferry, WV. 25425
Phone: (304) 535-2558
<http://www.edsmart.com/jz/index.htm>